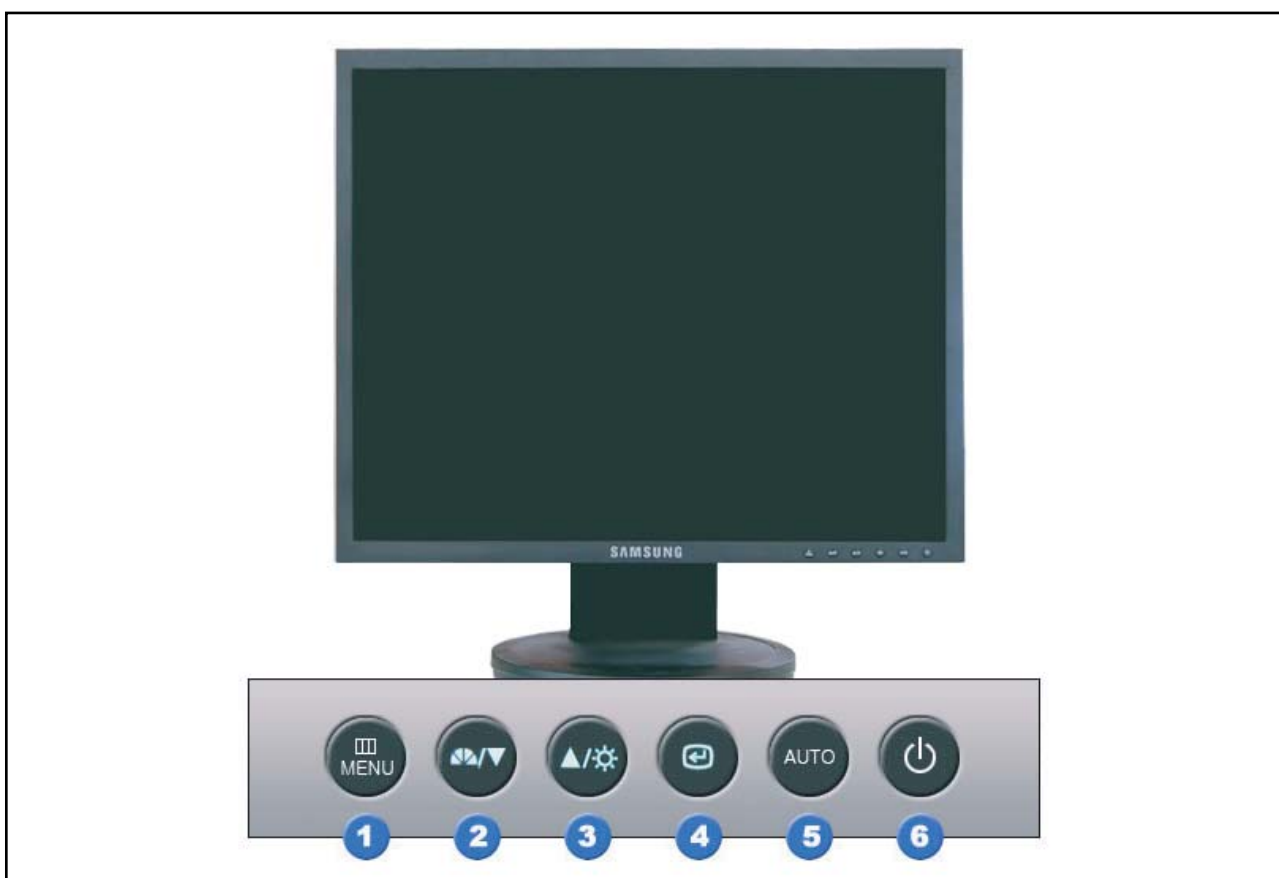


10 Operating Instructions and Installation

10-1 Front



1. Menu button

Opens the OSD menu. Also use to exit the OSD menu or return to the previous menu.

2. MagicBright button

MagicBright is a new feature providing optimum viewing environment depending on the contents of the image you are watching. Currently six different modes are available: Custom, Text, Internet, Game, Sport and Movie. Each mode has its own pre-configured brightness value. You can easily select one of six settings by simply pressing MagicBright control buttons.

1) Custom

Although the values are carefully chosen by our engineers, the pre-configured values may not be comfortable to your eyes depending on your taste. If this is the case, adjust the brightness and contrast by using the OSD menu.

2) Text : Normal brightness

For documentations or works involving heavy text.

3) Internet : Medium brightness

For working with a mixture of images such as text and graphics.

4) Game

For watching motion pictures such as a game.

5) Sport

For watching motion pictures such as a sport.

6) Movie : High brightness

For watching motion pictures such as a DVD or Video CD.

3. Brightness button

When OSD is not on the screen, push the button to adjust brightness.

2,3. Adjust buttons

Adjust items in the menu.

4. Enter button / Source button

Activates a highlighted menu item. /

Push the 'SOURCE', then selects the video signal while the OSD is off. (When the source button is pressed to change the input mode, a message appears in the center of the screen displaying the current mode -- analog or digital input signal.)

Note : If you select the digital mode, you must connect your monitor to the graphic card's port using the DVI cable.

5. Auto button

Use this button for auto adjustment.

6. Power button

Use this button for turn the monitor on and off.

7. Power indicator

This light glows green during normal operation, and blinks green once as the monitor saves your adjustments.

10-2 Rear



1. Power port

Connect the power cord for your monitor to the power port on the back of the monitor.

2. DVI port

Connect the DVI cable to the DVI port on the back of your monitor.

3. D-sub 15-pin port

Connect the signal cable to the 15-pin, D-sub connector on the back of your monitor.

4. Power on/off Switch(option)

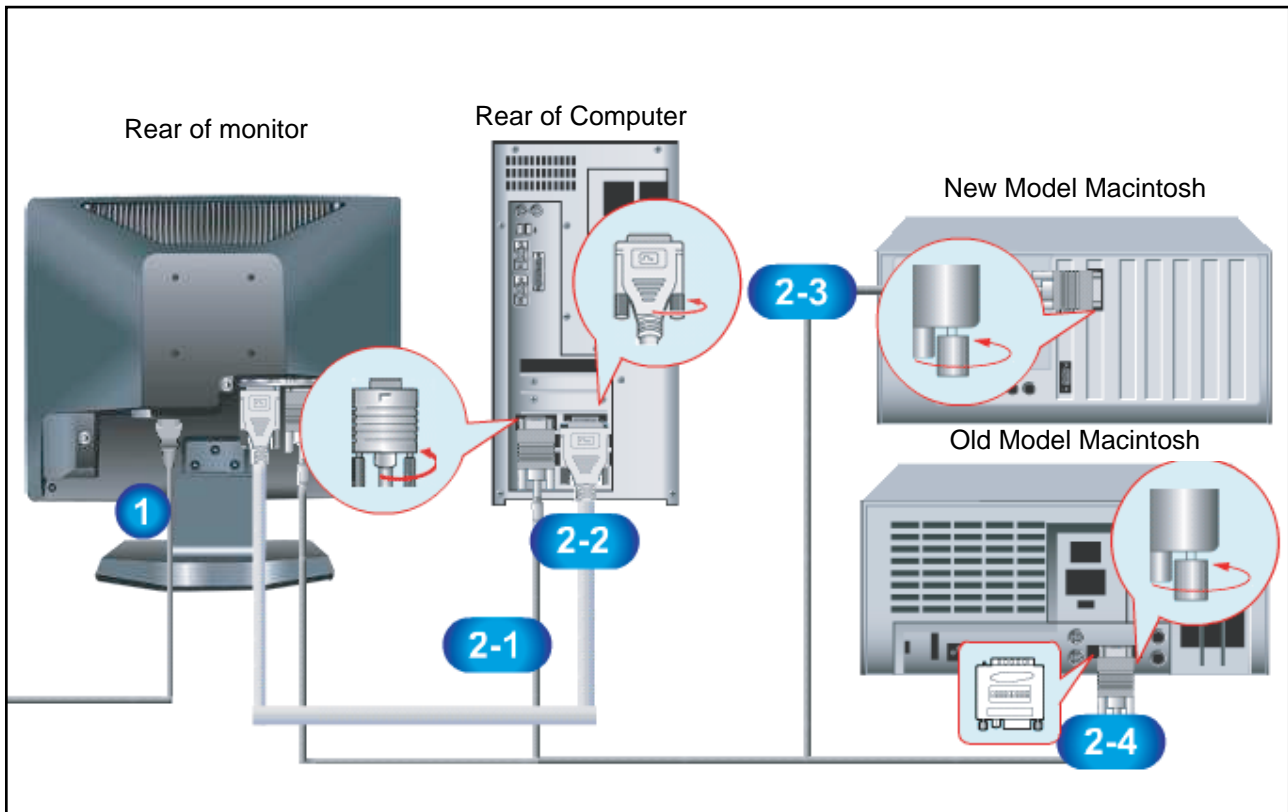
Use this button for turn the monitor on and off.

5. Kensington Lock

The Kensington lock is a device used to physically fix the system when using it in a public place. (The locking device has to be purchased separately.)

To get the information on using the Kensington Lock, contact an authorized dealer.

10-3 Connecting the monitor



1. Connect the power cord for your monitor to the power port on the back of the monitor. Plug the power cord for the monitor into a nearby outlet.

2-1. Using the D-sub (Analog) connector on the video card.
Connect the signal cable to the 15-pin, D-sub connector on the back of your monitor.



2-2. Using the DVI (Digital) connector on the video card.
Connect the DVI cable to the DVI port on the back of your monitor.

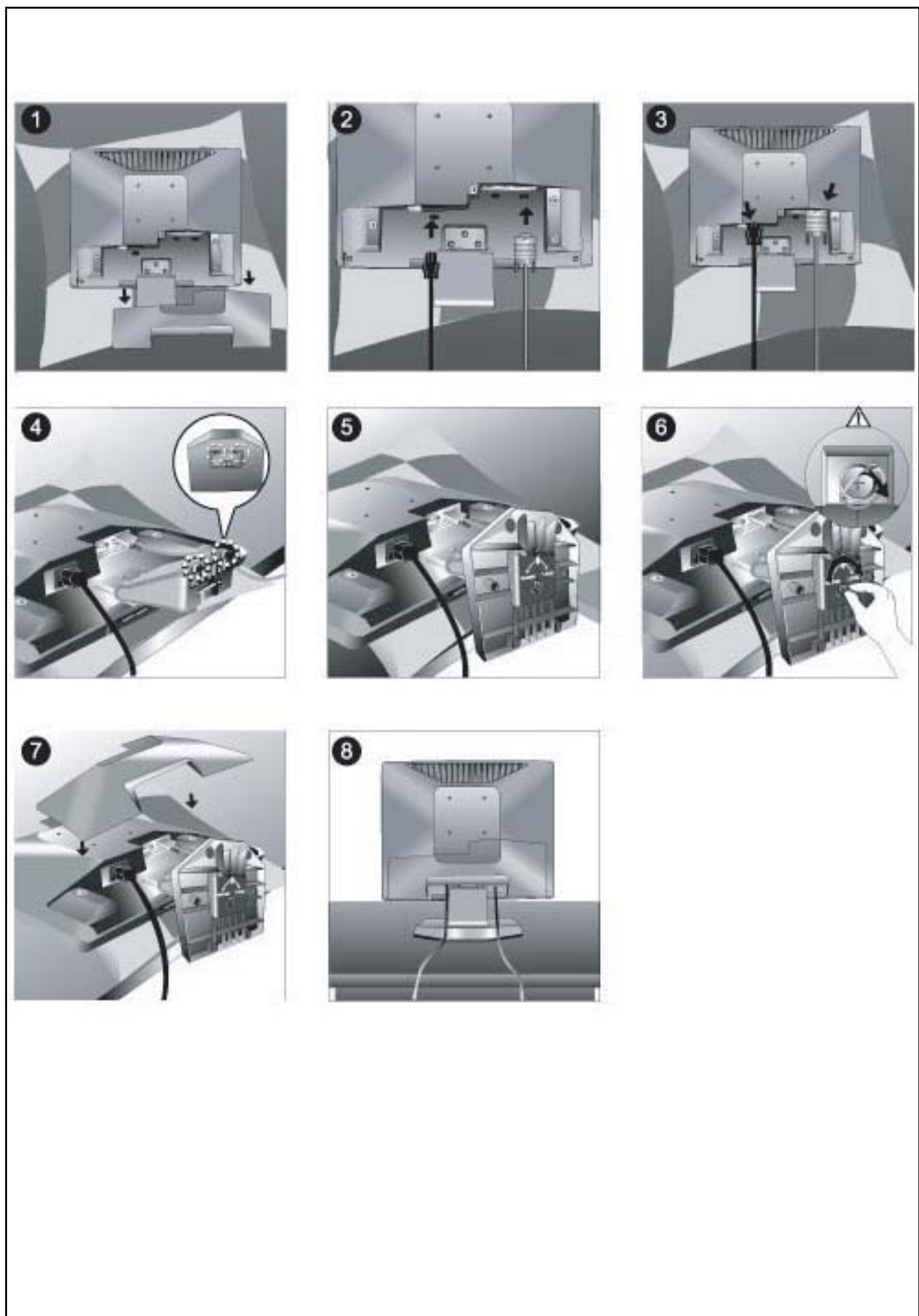


2-3. Connected to a Macintosh.
Connect the monitor to the Macintosh computer using the D-SUB connection cable.

2-4. In the case of an old model Macintosh, you need to connect the monitor using a special Mac adapter.

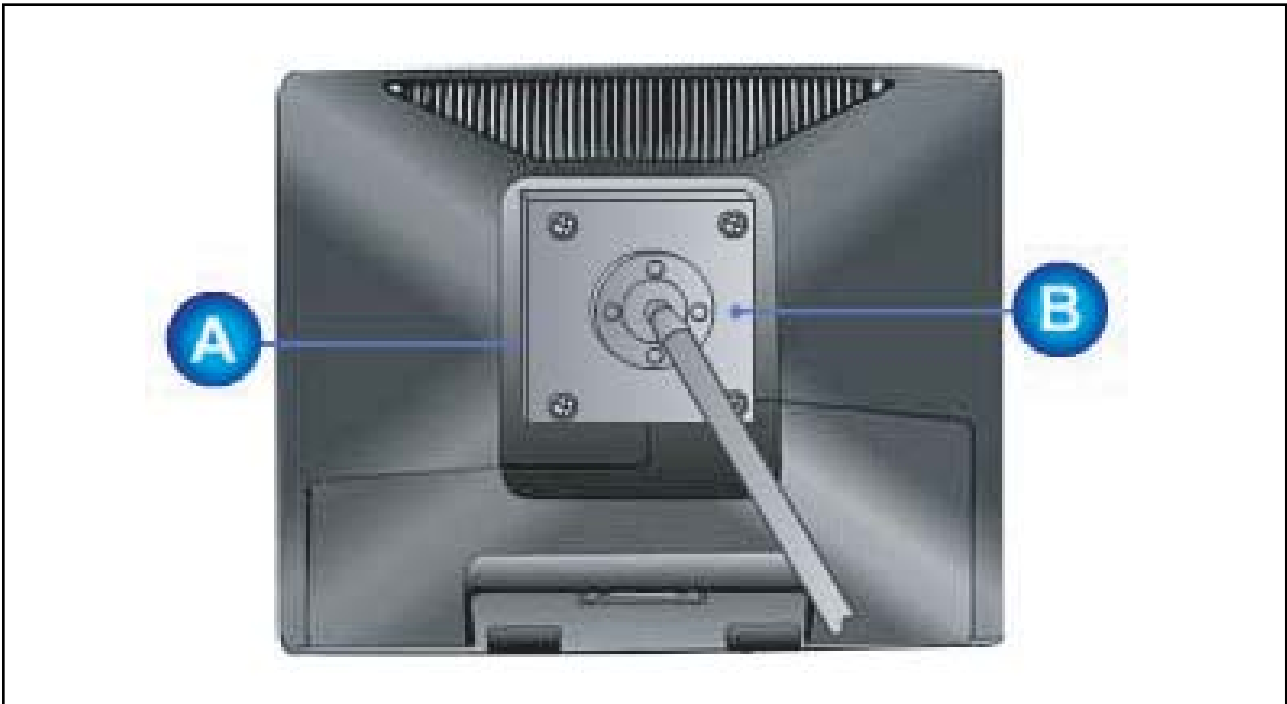
3. Turn on your computer and monitor. If your monitor displays an image, installation is complete.

10-4 Monitor Assembly



10-5 Attaching a Base

- This monitor accepts a 75mm x 75mm VESA-compliant mounting interface pad.



A. Monitor

B. Mounting interface pad

1. Turn off your monitor and unplug its power cord.
2. Lay the LCD monitor face-down on a flat surface with a cushion beneath it to protect the screen.
3. Remove four screws and then remove the stand from the LCD monitor.
4. Align the mounting interface Pad with the holes in the rear cover mounting pad and secure it with four screws that came with the arm-type base, wall mount hanger or other base.

Memo